

FW0125
 0807
 Supersedes
 0107

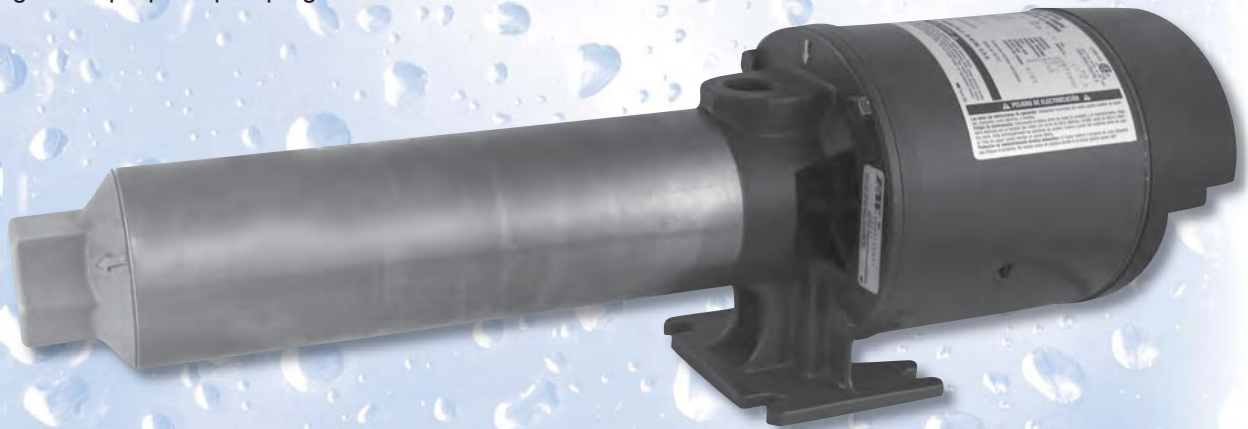


Pressure Booster Pumps

www.pure-aqua.com

PRESSURES TO 200 PSI

The Pressure Booster Pump is designed to increase water pressure from city mains or private water systems. Applications include pressure cleaning, spray or mist systems, jockey pumps, booster service, reverse osmosis, water circulation and general purpose pumping.



1/3 - 3 HP 60Hz or 50Hz

5, 7, 10, 19, 27, 35, 55 & 85 GPM

Stainless Steel, Powder Coated Cast Iron or Cast Iron Models

Material Construction

Component Description	Stainless Steel Models 5, 7, 10, 19, 27 & 35 GPM 1/3 thru 3 HP	Powder-coated Models 5, 7, 10, 19, 27 & 35 GPM 1/3 thru 3 HP	Cast Iron Models 5, 7, 10, 19, 27 & 35 GPM 1/3 thru 3 HP
Suction and Discharge Casting	304 (CF-8) stainless steel	Powder coated cast iron	Cast Iron
Pump Shell	304 heavy wall stainless steel	304 heavy wall stainless steel	304 heavy wall stainless steel
Staging*	Noryl® impellers and diffusers; type 304 stainless steel floating bearing inserts and acetal diffuser plates	Noryl® impellers and diffusers; type 304 stainless steel floating bearing inserts and acetal diffuser plates	Noryl® impellers and diffusers; type 304 stainless steel floating bearing inserts and acetal diffuser plates
Pump Shaft and Motor Coupling Assembly	303 stainless steel hex shaft with 316 S.S. motor to shaft coupling	416 stainless steel hex shaft with 316 S.S. motor to shaft coupling	416 stainless steel hex shaft with 316 S.S. motor to shaft coupling
Shaft Seal	Carbon-silicon carbide, stainless steel spring, and Viton®	Carbon-silicon carbide, stainless steel spring, and Buna-N	Carbon-silicon carbide, stainless steel spring, and Buna-N
O-Rings	Viton®	Buna N	Buna-N
Motor	Open drip proof (ODP) and Totally enclosed fan cooled (TEFC) motors available with single or three phase options.		

* Replacement cartridge assembly available for all models. Includes all necessary parts to restore pumps to like-new performance. No special tools required.

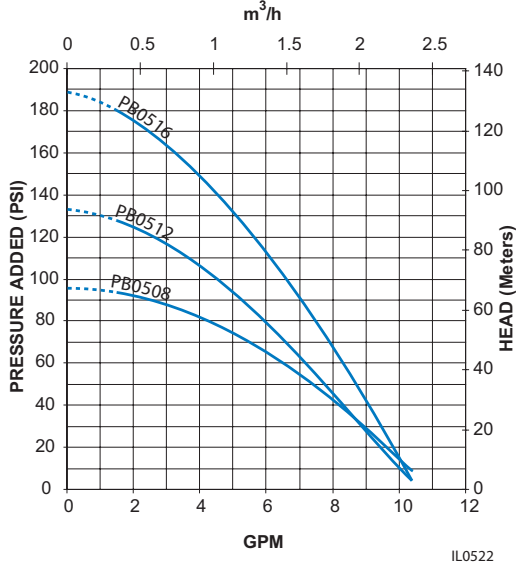
Noryl® is a registered trademark of General Electric.

Viton® is a registered trademark of Dupont.

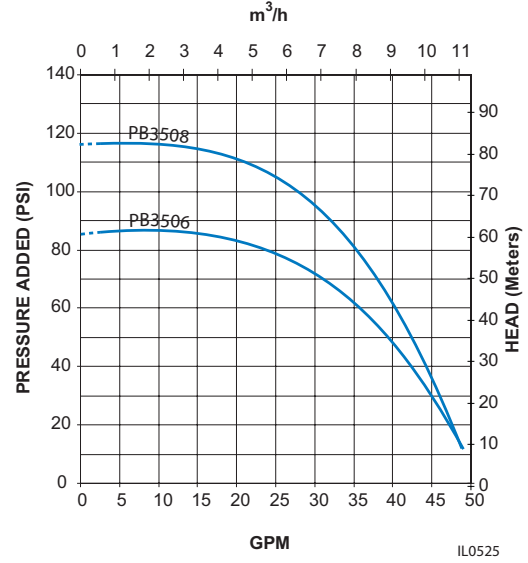


PERFORMANCE CURVES
3450 RPM 60 Hz

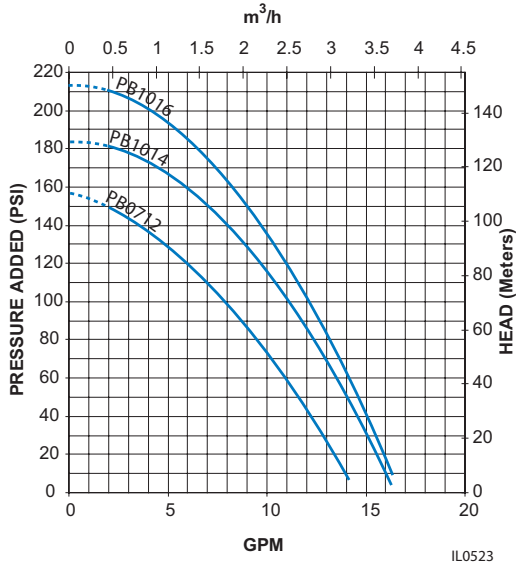
5 GPM



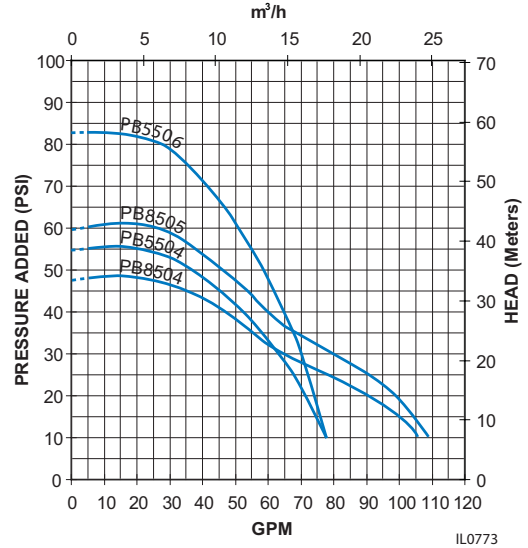
35 GPM



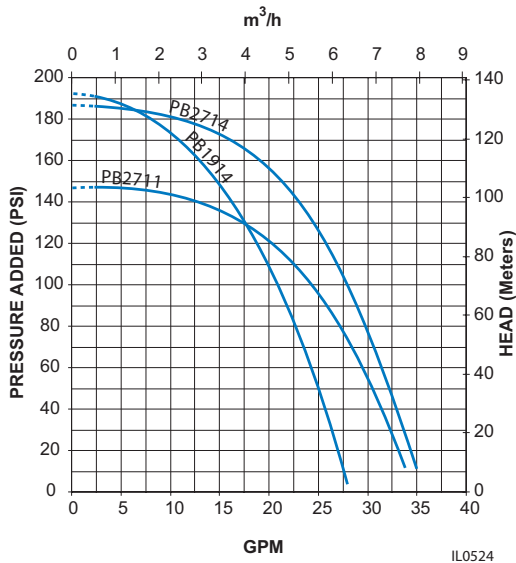
7 and 10 GPM



55 & 85 GPM



19 & 27 GPM

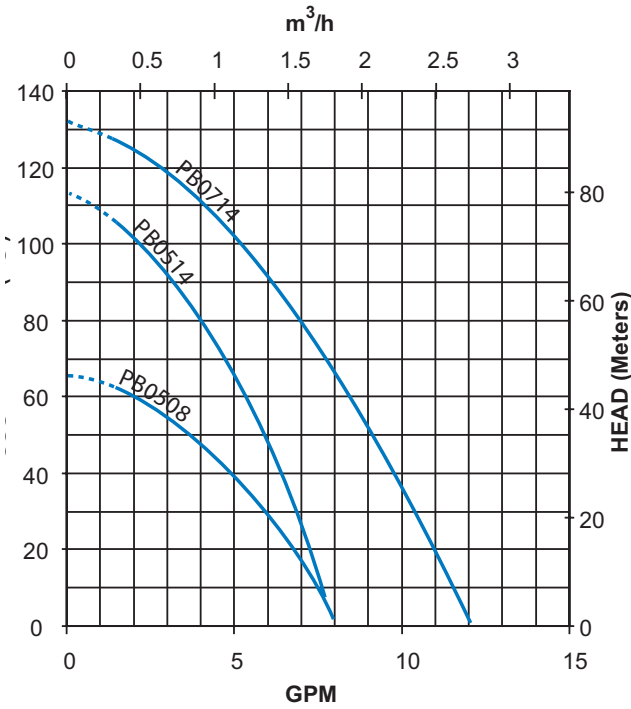


Do not operate pumps in flow range indicated by dotted line.



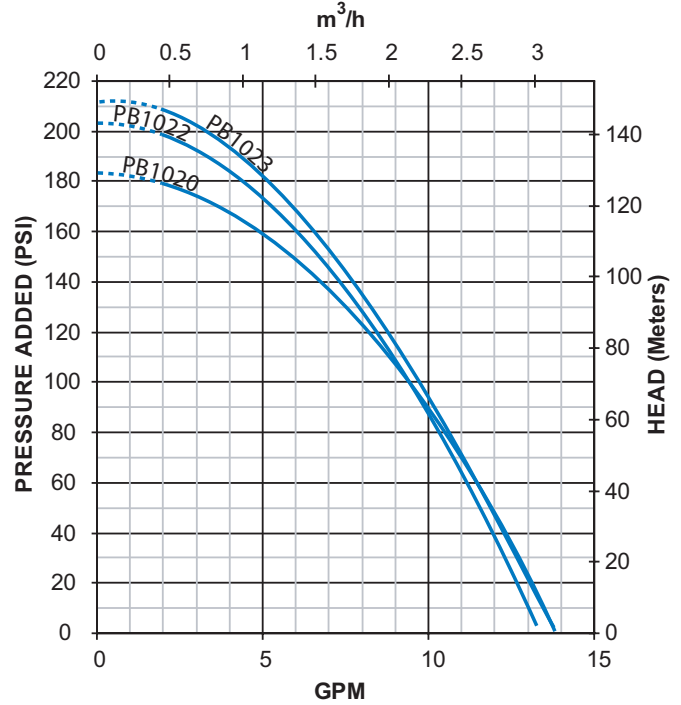
PERFORMANCE CURVES 2850 RPM 50 Hz

5 and 7 GPM



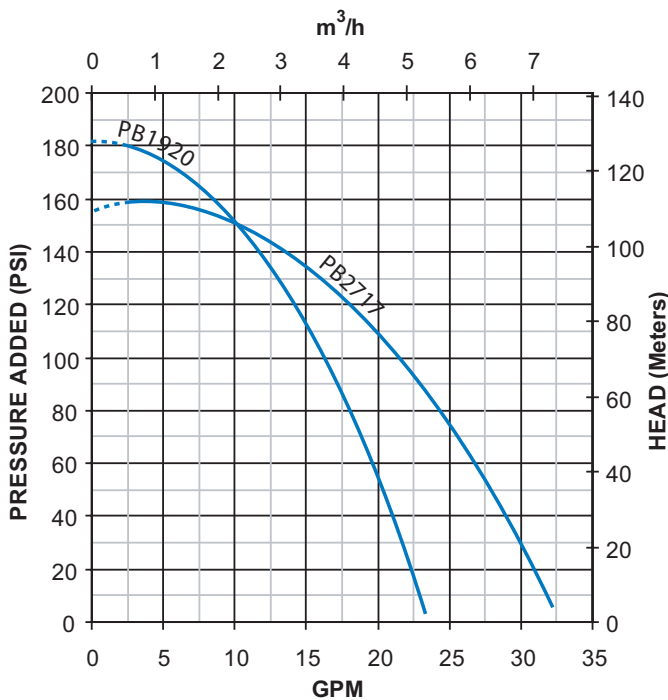
IL0507

10 GPM



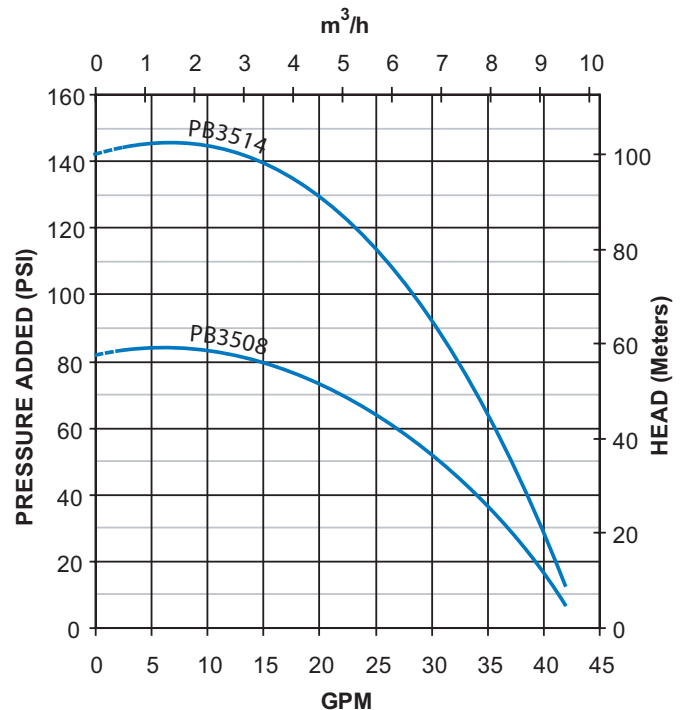
IL0508

19 & 27 GPM



IL0509

35 GPM



IL0510