


Composite Vessels – Specifications



Fleck Valve	Tank Dia. Inches / mm	Adder Ht. (X) Inches / mm
2750	18 / 457	6.5 / 165
2850	21 / 533	6.5 / 165
2900	24, 30 / 610, 762	12 / 305
3150	42 / 1067	10 / 254
3900	48-63 / 1219-1600	15 / 381

Installation Tips:

- Bolt base to floor
- Calculate height for valve and base combined (see photo)

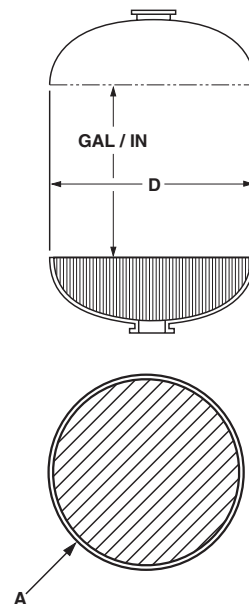
Color Options: AL - Almond  BL - Blue  BK - Black  GR - Gray  NA - Natural 

*Measurements are subject to change without notice and are for reference only.

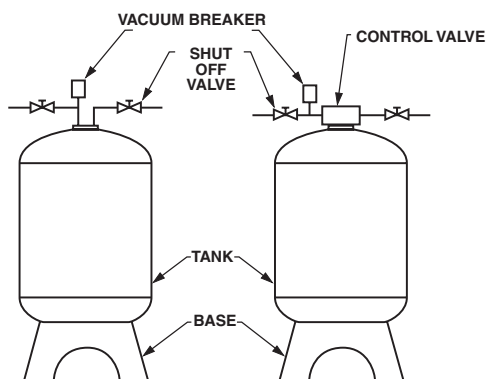
Dome Volume (gallons) and Straight Wall Gallon per Inch

Nominal Diameter			
D (inches)	Gallons* (One Dome)	Gallon / Inch (Approx.)	A (Sq. Feet)
12	1.0	0.5	0.7
13	1.4	0.5	0.9
14	1.7	0.6	1.1
16	2.7	0.8	1.3
18	3.7	1.0	1.8
21	6.2	1.4	2.4
24	9.3	1.9	3.0
30	18	2.9	4.6
36	33	4.2	6.7
42	52	5.7	9.0
48	74	7.5	12.0
63	168	13.0	20.0

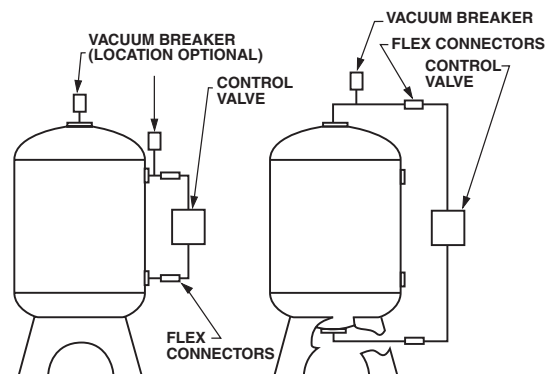
*Cubic Ft. = 0.1337 x Gallons



Vacuum Breaker Installation



Flex Connectors Installation

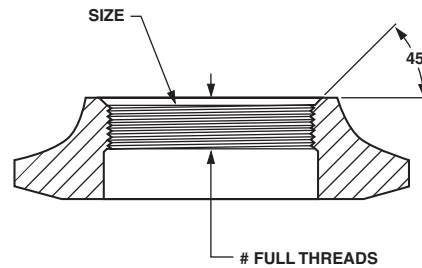


NOTE: Flexible connectors must be installed between hard piping and tank openings. These pressure vessels are rated for an internal negative pressure of 5” HG (17 Pa) vacuum below atmospheric. If negative pressure could ever exceed 5” Hg (17 Pa), an adequate vacuum breaker must also be properly installed. Failure to install flex connection properly, or improper installation of a vacuum breaker when required, may void the warranty.

Composite Vessels – Specifications

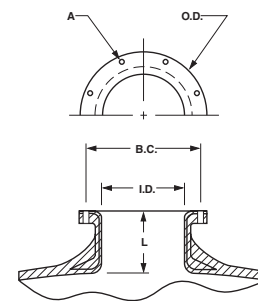
Top and Bottom Opening Threads

Size	Composite/ Polyglass	Number of Full Threads	Composite
2.5"- 8" NPSM	6	3 min	6
4"- 8" UN	7	3 min	7
4.5"- 8" Buttress	7	3 min	7



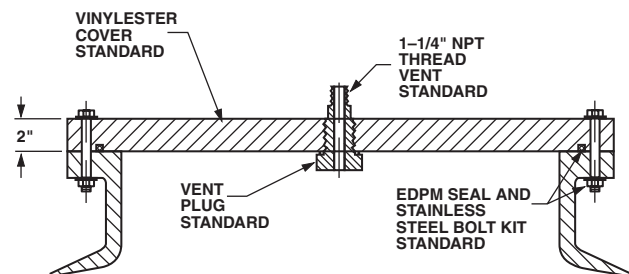
Top and Bottom Opening Flanges/Manway

Size	L	I.D.	B.C.	O.D.	A Bolt Dia.	Number of Holes	Weight (lbs.)
6" SNA	3.6"	5.9"	8.5"	9.4"	0.31"	12	5.8
10" ANSI	3.7"	10.0"	14.3"	16.0"	0.88"	12	17.8
16" Manway SNA	4.3"	16.0"	20.4"	21.3"	0.50"	24	34.0



Manway Cover

Material	Pressure Rating	Tapping
CPVC	100 psi	As requested
VE	150 psi	As shown only



Side Flange

Size	L	I.D.	B.C.	O.D.	B Bolt Dia.	Number of Holes	Weight (lbs.)
4" ANSI	4.1"	4.0"	7.5"	9.0"	0.63"	8	6.4

